

I-87089W+DN-1618UB Quickstart

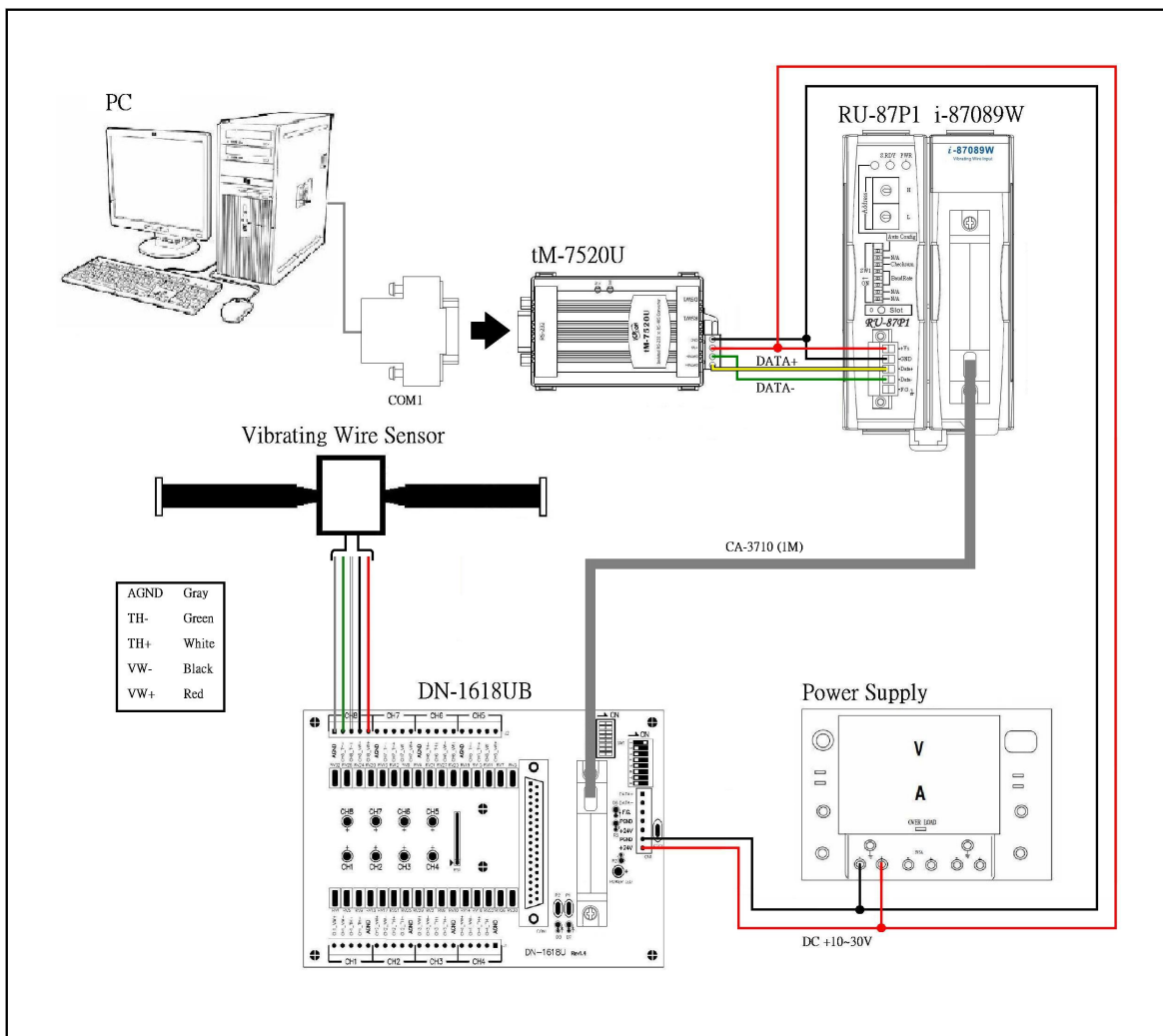
一.Required:

- (1)Hardware :
- a. I-87089W x1
 - b. RU-87P1 x1
 - c. DN-1618UB x1
 - d. tM-7520U x1
 - e. Vibrating Wire Sensor x1

(2)Software : DCON_Utility

(3)Power Supply : +24 V_{DC}

二.Wire Connections:

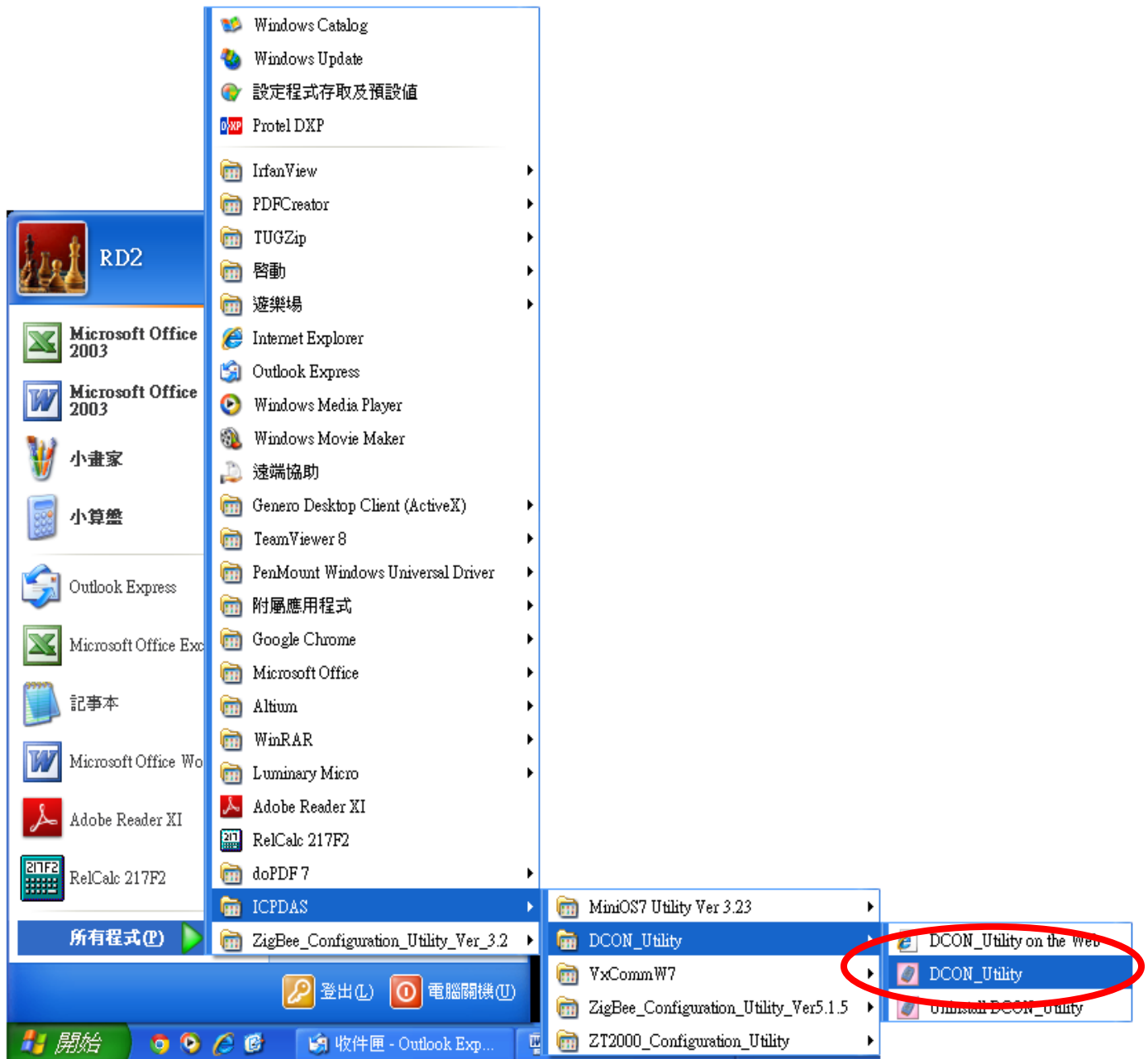


三.How to use

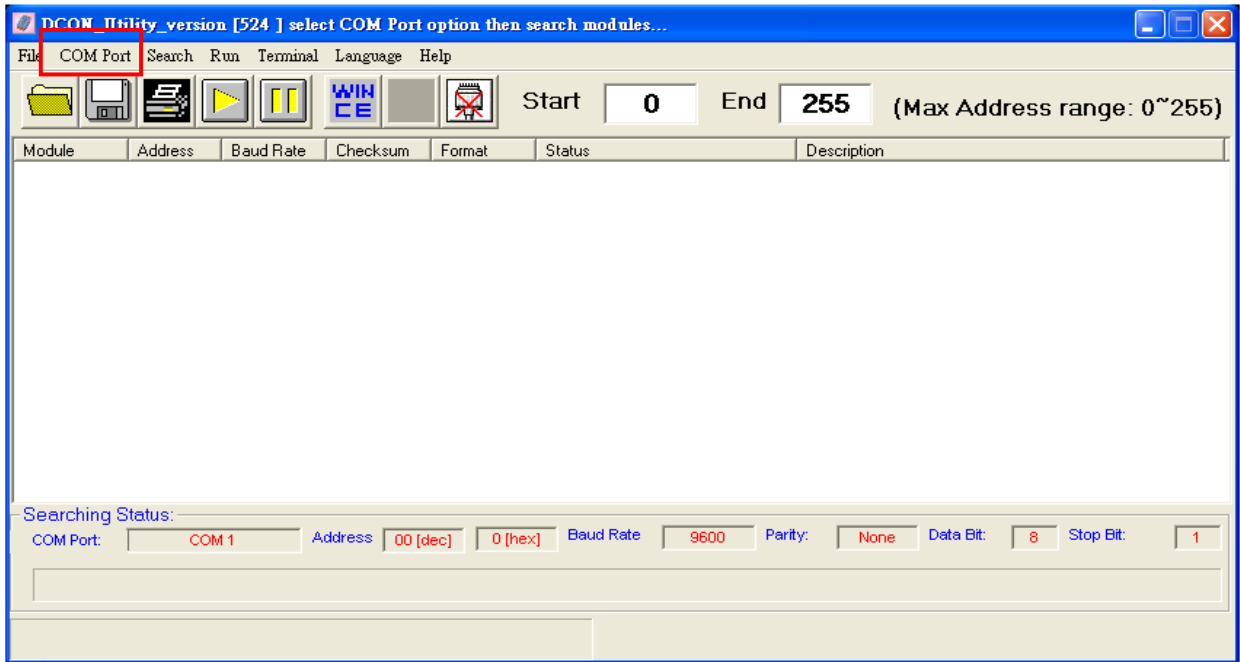


(1)Open DCON_UTILITY software

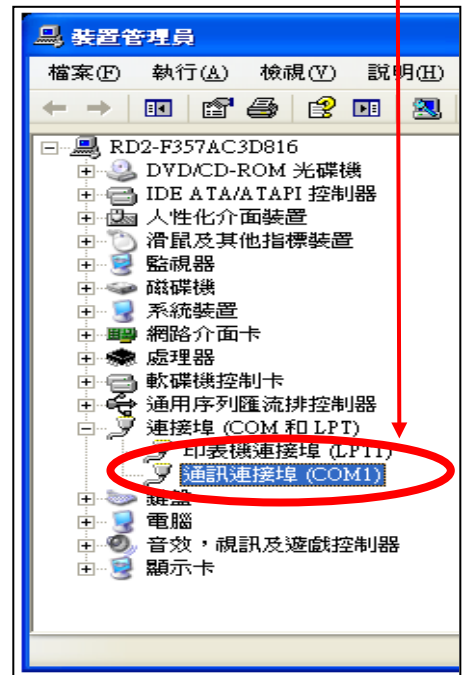
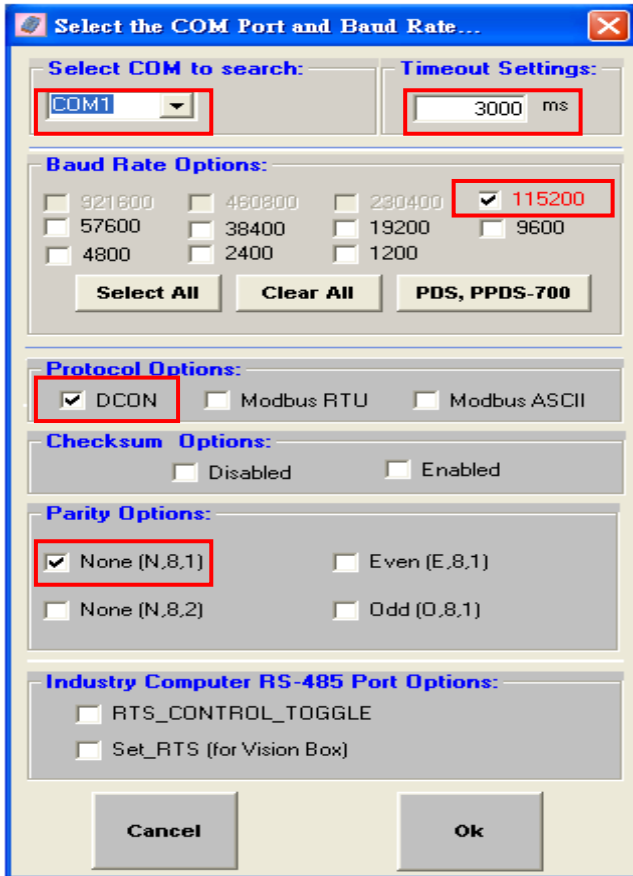
a.Path : Start → ICPDAS → DCON_UTILITY → **DCON_UTILITY**



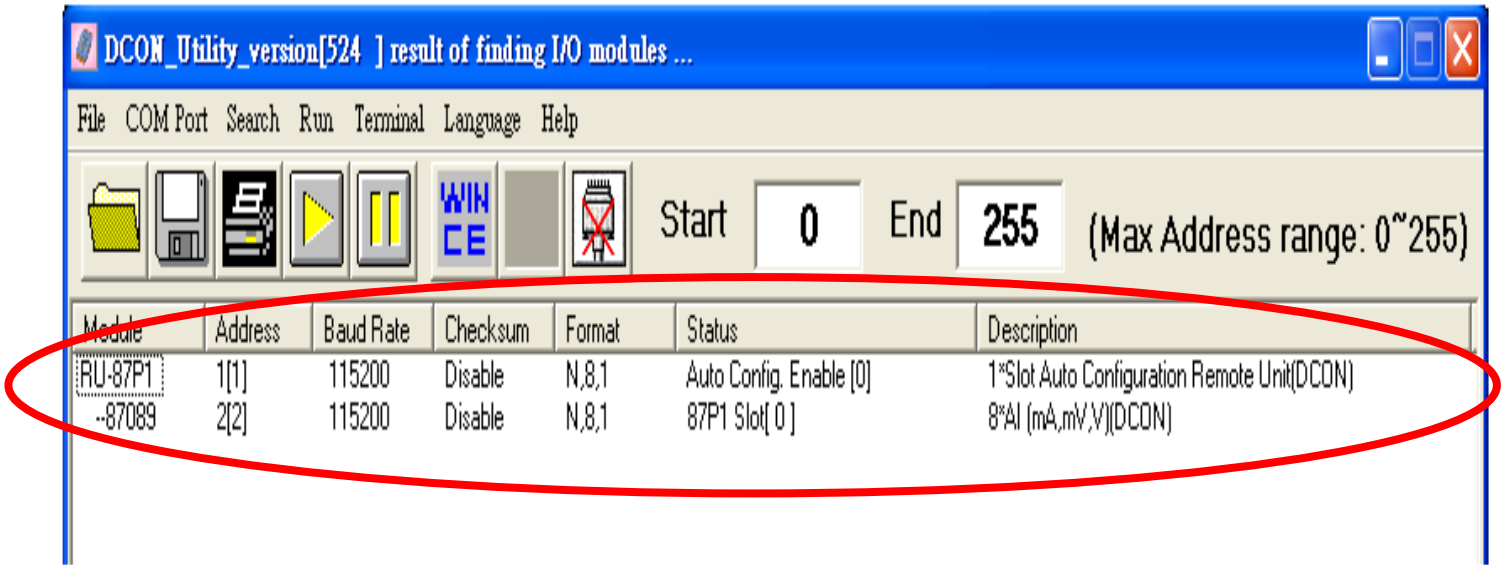
(2) Open DCON Utility → Select COM Port



- Select COM to search → follow Device Manager
- Timeout Settings → 3000 ms
- Baud Rate Options → 115200 bps
- Protocol Options → DCON
- Parity Options → None (N,8,1)

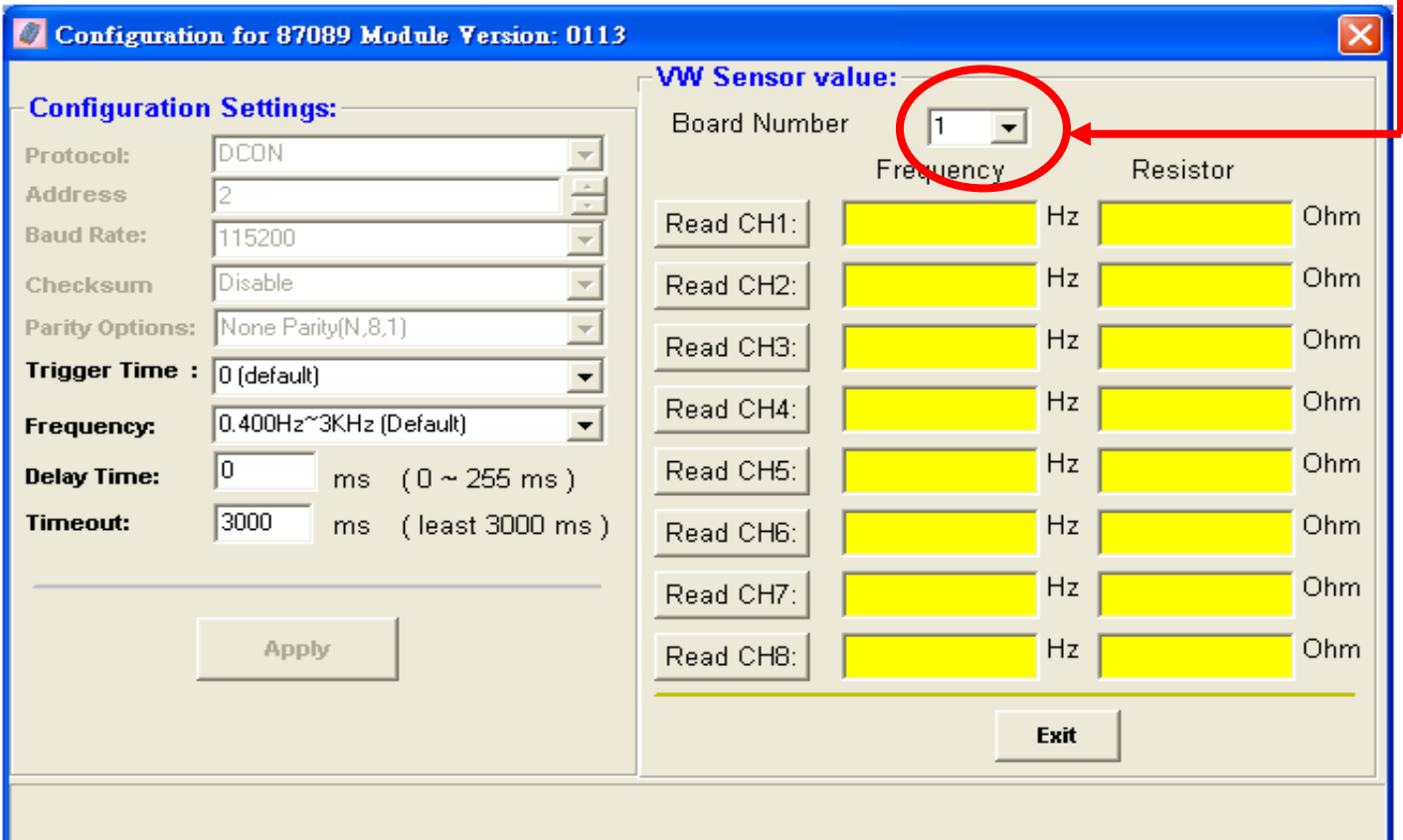
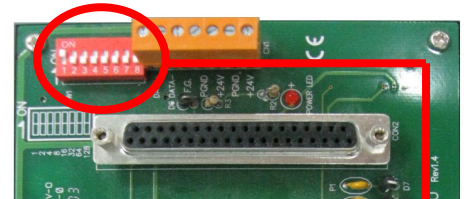


(3) Select  to Run



When connect success , select **-87089** to open Configuration window

- ※註 : Trigger Time → Default=0
- Frequency → Follow Spec of Sensor
- Delay Time → Default=0
- Timeout → 3000 ms
- Board Number → Follow SW1 of DN-1618UB(Default is 1)



Select **Read CH8** : (For this example, Vibration wire Sensor is connect with CH8)

Configuration for 87089 Module Version: 0113

Configuration Settings:

Protocol: DCON
Address: 2
Baud Rate: 115200
Checksum: Disable
Parity Options: None Parity(N,8,1)
Trigger Time : 0 (default)
Frequency: 0.400Hz~3KHz (Default)
Delay Time: 0 ms (0 ~ 255 ms)
Timeout: 3000 ms (least 3000 ms)

VW Sensor value:

Board Number: 1

	Frequency	Resistor
Read CH1:	Hz	Ohm
Read CH2:	Hz	Ohm
Read CH3:	Hz	Ohm
Read CH4:	Hz	Ohm
Read CH5:	Hz	Ohm
Read CH6:	Hz	Ohm
Read CH7:	Hz	Ohm
Read CH8:	Hz	Ohm

Buttons: Apply, Exit

Configuration for 87089 Module Version: 0113

Configuration Settings:

Protocol: DCON
Address: 2
Baud Rate: 115200
Checksum: Disable
Parity Options: None Parity(N,8,1)
Trigger Time : 0 (default)
Frequency: 0.400Hz~3KHz (Default)
Delay Time: 0 ms (0 ~ 255 ms)
Timeout: 3000 ms (least 3000 ms)

VW Sensor value:

Board Number: 1

	Frequency	Resistor
Read CH1:	Hz	Ohm
Read CH2:	Hz	Ohm
Read CH3:	Hz	Ohm
Read CH4:	Hz	Ohm
Read CH5:	Hz	Ohm
Read CH6:	Hz	Ohm
Read CH7:	Hz	Ohm
Read CH8:	825.74 Hz	29470 Ohm

Buttons: Apply, Exit